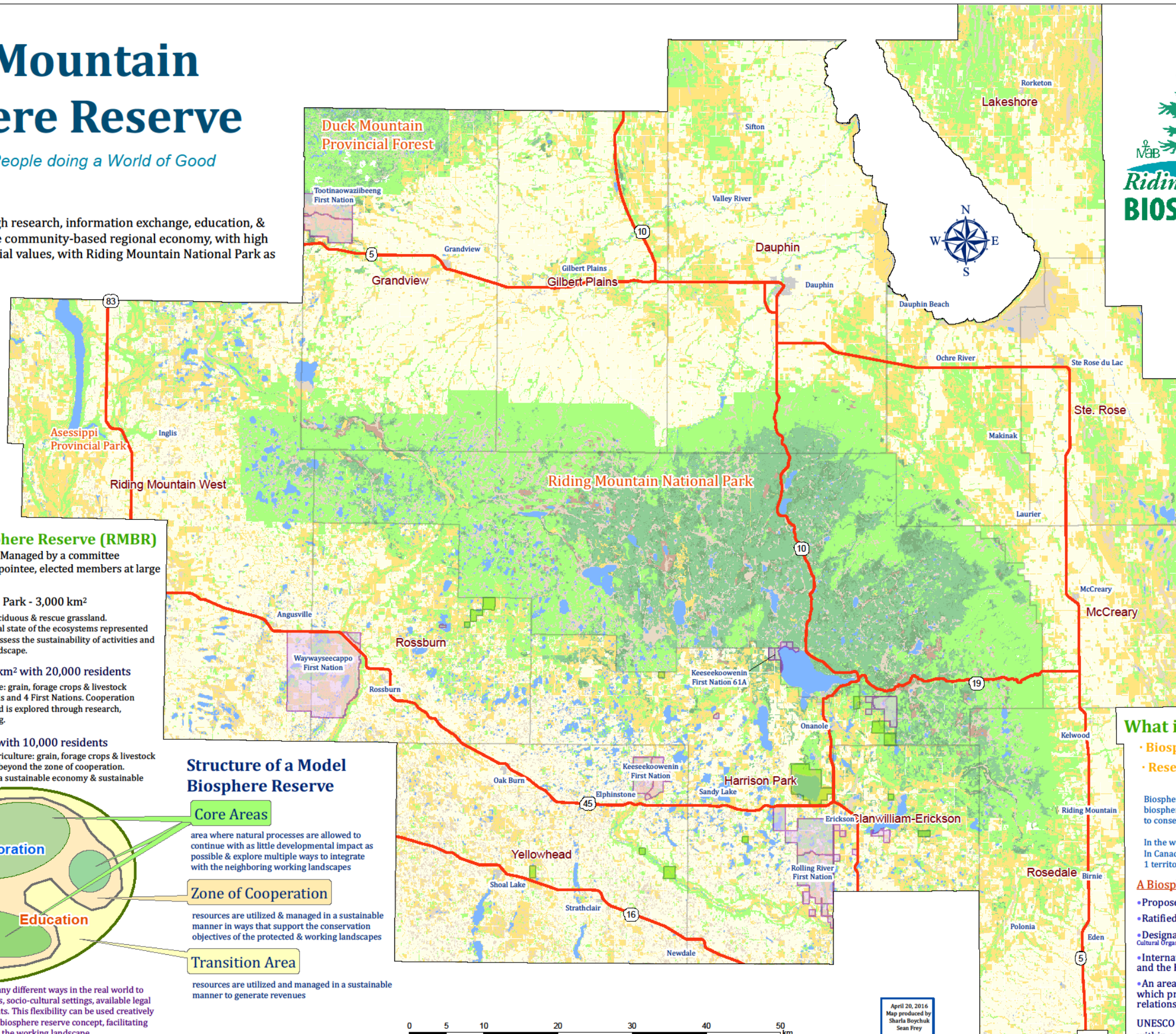


Riding Mountain Biosphere Reserve

A World of Good People doing a World of Good

Mission:

To foster & encourage, through research, information exchange, education, & communication, a sustainable community-based regional economy, with high biodiversity, landscape, & social values, with Riding Mountain National Park as a key component.



Riding Mountain Biosphere Reserve (RMBR)

Designated in 1986 - 14,600 km² Managed by a committee composed of municipal council appointee, elected members at large and First Nations representatives

Core Riding Mountain National Park - 3,000 km²

Consists of mixedwood forest, eastern deciduous & rescue grassland. It serves as a reference point of the natural state of the ecosystems represented by the Biosphere Reserve and is used to assess the sustainability of activities and environmental quality in the working landscape.

Zone of Cooperation 4,700 km² with 20,000 residents

The area largely developed for agriculture: grain, forage crops & livestock production involves 12 municipal councils and 4 First Nations. Cooperation is essential to achieving sustainability and is explored through research, education and community based planning.

Transition Area 6,900 km² with 10,000 residents

The area is also largely developed for agriculture: grain, forage crops & livestock production where people work together beyond the zone of cooperation. The RMBR assists in the development of a sustainable economy & sustainable community structure.

Structure of a Model Biosphere Reserve

Core Areas

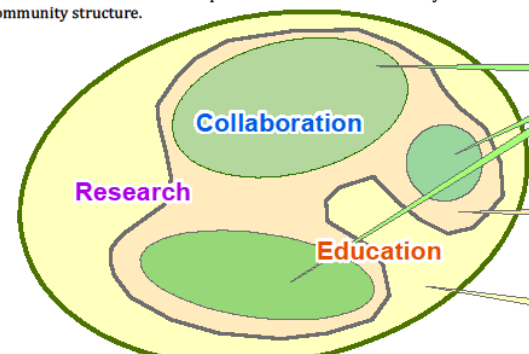
area where natural processes are allowed to continue with as little developmental impact as possible & explore multiple ways to integrate with the neighboring working landscapes

Zone of Cooperation

resources are utilized & managed in a sustainable manner in ways that support the conservation objectives of the protected & working landscapes

Transition Area

resources are utilized and managed in a sustainable manner to generate revenues



This zonation scheme is applied in many different ways in the real world to accommodate geographical conditions, socio-cultural settings, available legal protection measures & local constraints. This flexibility can be used creatively & is one of the strongest points of the biosphere reserve concept, facilitating the integration of protected areas and the working landscape.

What is a Biosphere Reserve?

- **Biosphere** - sphere of life
- **Reserve** - an important area of the world recognized for its special qualities

Biosphere Reserves highlight special areas within the biosphere where people demonstrate better approaches to conservation & sustainable resource use.

In the world: 669 Biosphere Reserves in 120 Countries
In Canada: 18 Biosphere Reserves in 8 provinces and 1 territory

A Biosphere Reserve is:

- Proposed by its residents
- Ratified by a national committee
- Designated by UNESCO (United Nations Educational, Scientific & Cultural Organizations)
- Internationally recognized under UNESCO's Man and the Biosphere (MAB)
- An area of terrestrial & coastal marine ecosystems which promote & demonstrate a balanced relationship between people & nature

UNESCO has no authority or regulatory powers within a Biosphere Reserve.

April 20, 2016
Map produced by
Sharla Boychuk
Sean Frey